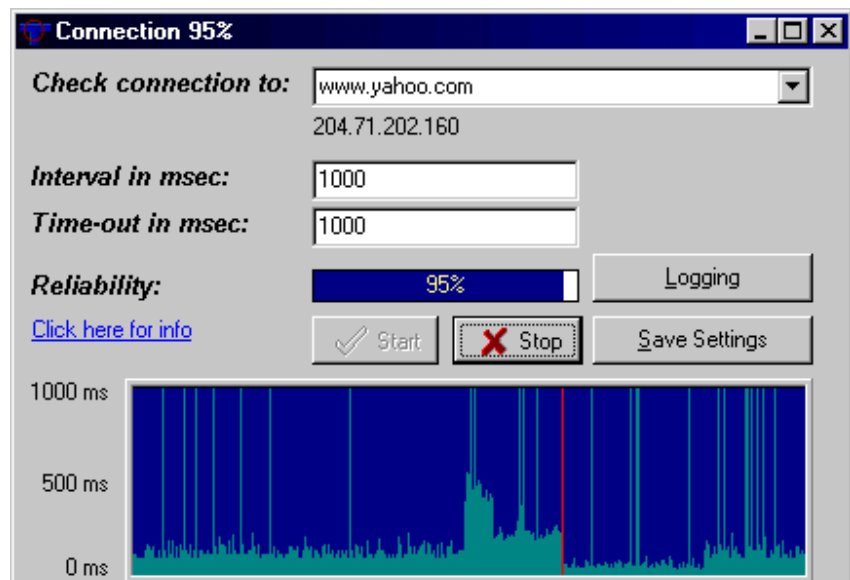

Connection Checker



Revision 1.0

25/04/2001

ABC-View

Contents

1.	WHAT IS “CONNECTION CHECKER”	3
1.1.	Introduction	3
1.2.	How does “Connection Checker” work?	3
2.	HOW TO ENTER MY DATA	4
3.	WHAT CAN I CHECK?	6
4.	ALARMS AND LOGS	7
4.1.	Graph	7
4.2.	Taskbar	7
4.3.	Status Bar	8
4.4.	Audible Alarms	7
4.5.	Automatic Logging to a File	8
5.	WHERE TO GO FOR HELP?	10
5.1.	Register now!	10

1. What is “Connection Checker”

1.1. Introduction

In this era of the internet it is almost of vital importance that your connection to the outside world over IP (Internet Protocol) is secured. It ensures that you can receive your mail, and that you can connect to your favourite sites with a browser.

Others would like to check their own websites, and log its accessibility. For instance, if you are selling products through a website you would really like to know if it is open for the public! Just like someone would like to keep the store open during business hours.

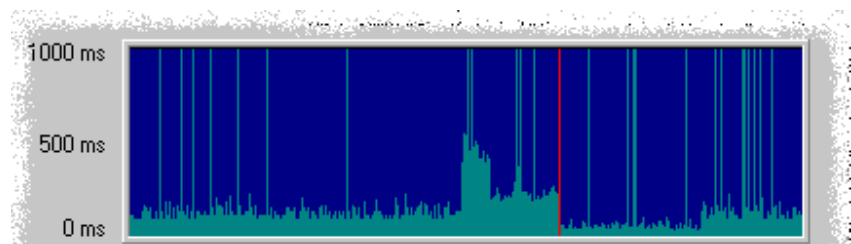
This small utility helps you to check this connection automatically and even logs its findings for you.

1.2. How does “Connection Checker” work?

Connection Checker uses the IP protocol “PING” command. This is a command that sends a small package to a remote site, and waits for it to return. Obviously, when it returns home safely, this means that the remote site is reachable over the network.

It is normal that sometimes packages get lost – just like people sometimes get lost when driving in a strange area. The architecture of the internet allows this – and eventually in most cases the biggest bunch of the packages do arrive back safely from their world trip.

This utility shows this graphically in the graph window:

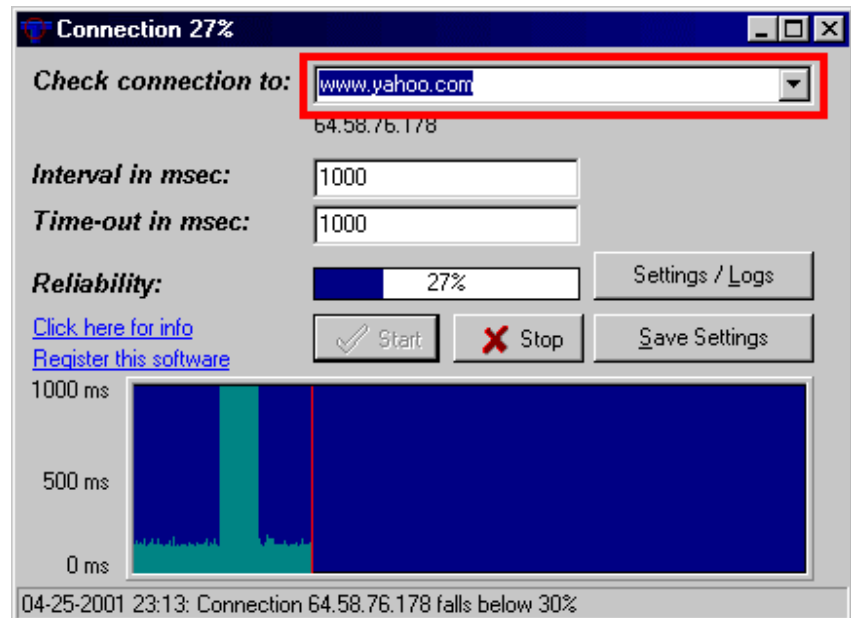


On the left you see the legend: in this example, the settings **1000ms**, **500ms** and **0 ms** (ms is short for milliseconds).

As you can see, the peaks are lost packages, but there are enough packages returning safely after about 200 ms. Sometimes traffic is killing (traffic jams) which causes the packages to take longer (in the example up to 500 ms).

2. How to enter my data


You can enter the sites you want to check in the edit box at the top:



In this example, we typed in **www.yahoo.com** to check the connection to that site.

To start the utility, simply click on the [START] button. You will notice that the IP address (the low level numeric address belonging to the written address) is displayed underneath the edit box, and any machine messages are displayed there too.

Recent URL list

When you click on the small arrow  of the edit control, you will get a list of most recently used site addresses. This helps you prevent having to type in the same address over and over again.

Reliability

The reliability of the connection is graphically displayed as a percentage and will gradually change when a connection terminates or opens. It's value (0% for closed connection, 100% for opened connection) is also available for logging.

Interval and Time-out

The default settings of "Interval" and "Time-out" boxes, 1000 ms, are usually OK.

The interval defines the time lapse between two "Ping" commands, and the Time-out defines the amount of time that the "Ping" command waits before it decides that the package was lost.

Save Settings

Use this button to store your settings to disk (e.g. the web addresses that you typed). Your settings are stored in the file **ConnectionChecker.ini**.

3. What can I check?

Basically you can check any kind of internet address. This is not limited to websites. So you can also check FTP sites, mail servers and IRC chat servers. The only thing you need to know is the address.

- Web address:** A web address is usually of the form:
http://www.company.com
You can either type in or omit the “http://” part. To check our website, type in:
www.abc-view.com
- Mail server:** To check if you have a connection to your mail server, just type in the address that you have obtained which normally goes in the edit box for “SMTP Server”.
Example: mail.yahoo.com
- FTP sites:** FTP sites are easily checked by exchanging **www** for **ftp**.
Example: ftp.geocities.com
- Plain IP addresses:** Some friends might have a permanent connection to the internet (cable modem), but they do not have a website.
If you want to check if their computer is on, you can ask their IP address (4 numbers with dots inbetween) and type that in the box.
Example: 226.32.74.55
- My own computer** Type in **localhost** or **127.0.0.1** to see if your own computer is configured correctly

4. Alarms and logs

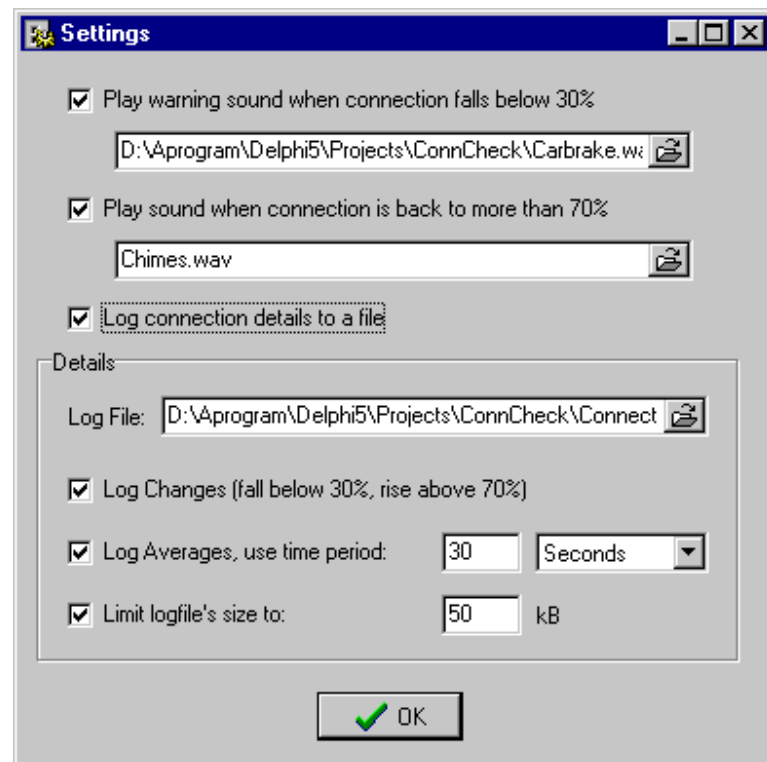
4.1. Graph

The graph shows the history of the connection checks of approximately the last five minutes

Both date (day-month-year) as well as time (hour-minute) are displayed.

4.2. Audible Alarms

When you click on the button [Settings / Logs] you are presented with the “Settings” dialog box:



In this dialog you can select whether you want to hear an audible alarm when a connection fails or comes back on. You can specify the audio file for each event.

4.3. Taskbar

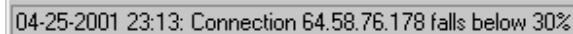
When you are working on something you can leave **Connection Checker** in the background minimized, and just occasionally check the status of the connection by looking at the taskbar:



The percentage is displayed there, so that you do not have to maximize the utility again.

4.4. Status Bar

The status bar of this utility shows when exactly the connection felt to a reliability of **less than 30%** or when it rose up to a level of **more than 70%**.

A screenshot of a status bar with a grey background and a black border. The text inside reads: '04-25-2001 23:13: Connection 64.58.76.178 falls below 30%'.

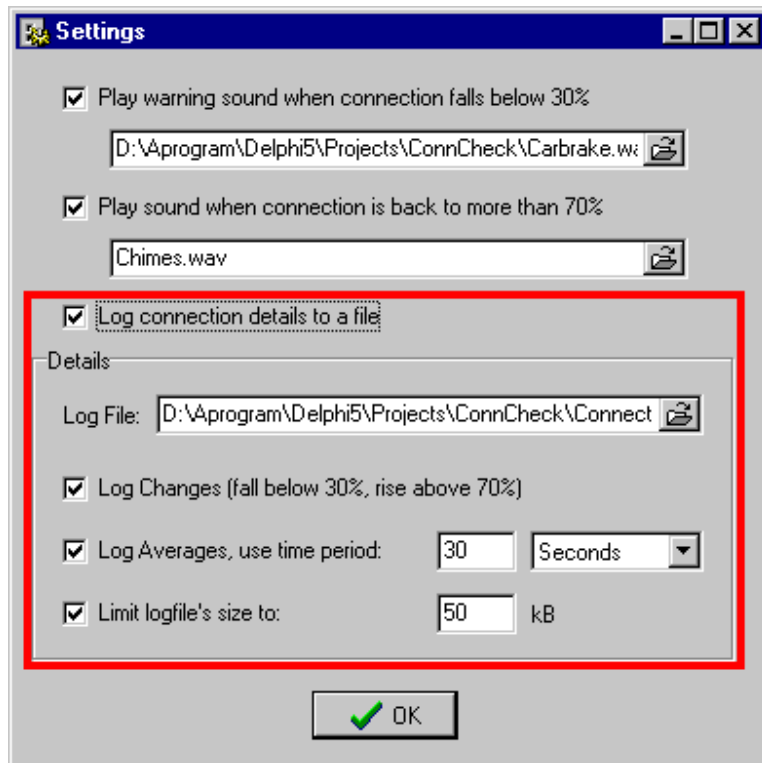
4.5. Automatic Logging to a File

If you need some kind of proof for yourself or your business about the status of a connection over a longer period of time, you can use the “log file” option.

This can for example be helpful in these situations:

- You want to have show your provider that the service isn't as 100% as they say it is
- You want to check if your site that sells your T-shirts is open all the time
- You want to find out if your friend stays up all night.

In short, there are numerous reasons to use the logging option. Here's how it goes:



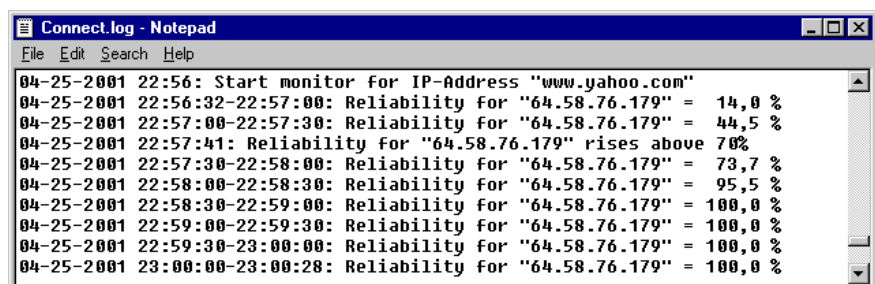
Select “**Log connection details to a file**”.

Select “**log averages**” if you want to see average reliability over time periods, specified by the other two boxes. You can select a number of Seconds, Minutes, Hours and even Days.

In the example a 30 second interval is chosen. This means that the logfile will show one line per 30 seconds, specifying the connection’s reliability.

You can specify the **logfile** name by clicking on the small “Open Folder” icon. In order to make sure that your disk is going to stay clean, you can limit the **filesize** of the logfile to a maximum.

Here’s an example of how the final logfile looks:



Note!

If you are running an **evaluation version**, you will not be able to fully profit from this feature, because the logging will stop after 5 minutes See for more details on registering the section “Where to go for help”.

5. Where to go for help?

Support by email and telephone is reserved for registered customers. If you have registered, you can send a request for support to ABC-View's email address:

support@abc-view.com

You will then get an answer to your questions as soon as is possible, and you will be provided with a phone number to call if you need further assistance.

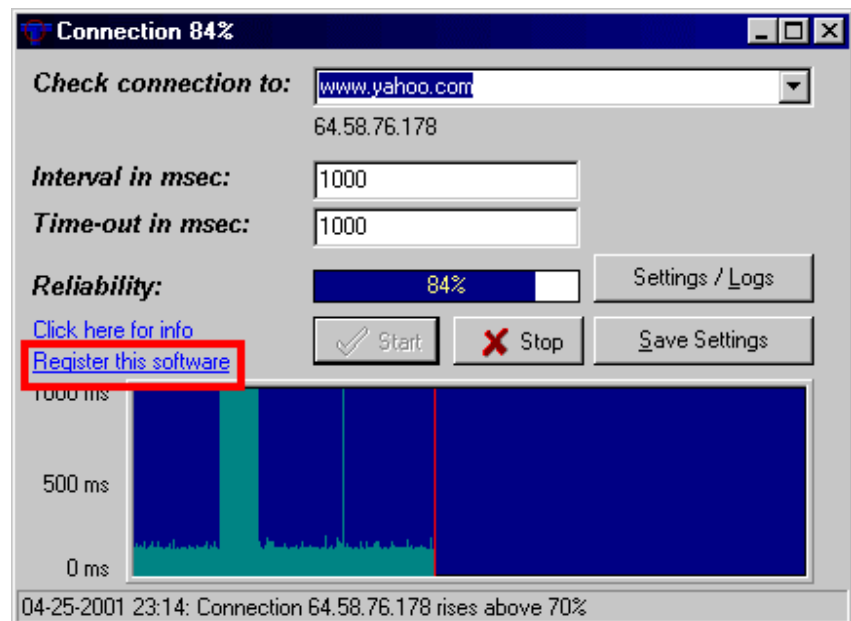
5.1. Register now!

If you are running an evaluation version, you will not be able to fully profit from all features, because the logging will stop after 5 minutes.

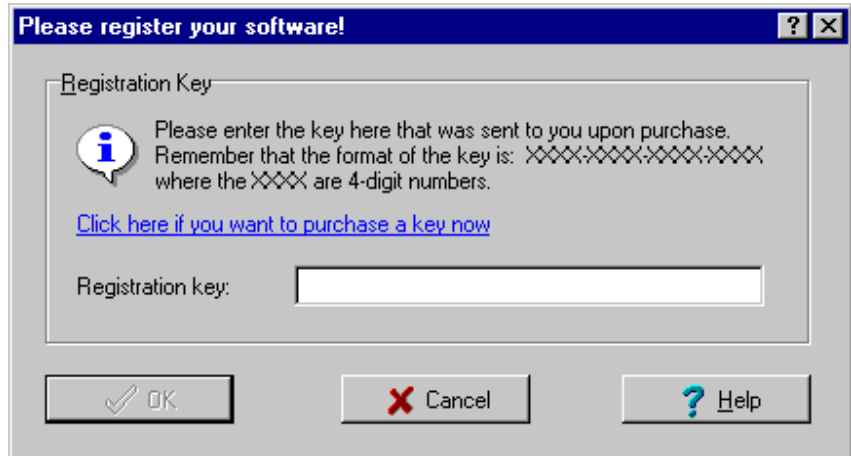
You can unlock the software so that it becomes a registered copy, by obtaining a **registration key**. You will then be able to log your connections without interruption.

How to enter your key

Click on the small text saying "Register this software".

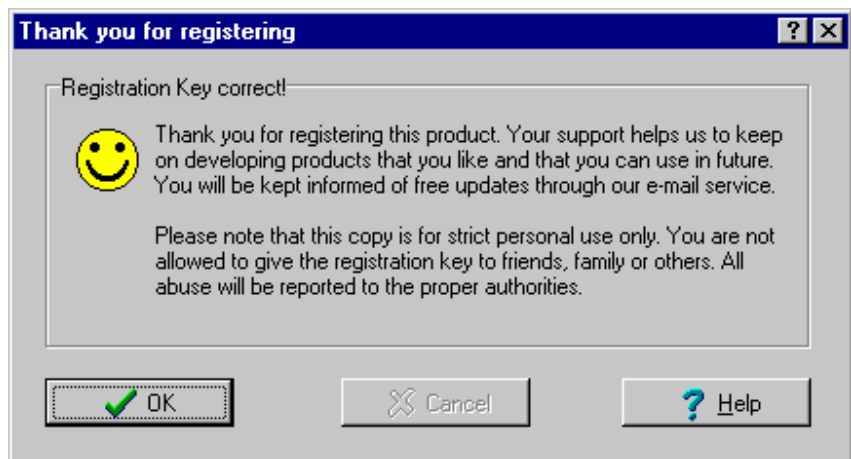


Now, enter the key that was provided to you on purchase.



If you don't have a key yet, you can purchase one by clicking on the link saying "Click here if you want to purchase a key now". If you use a credit card you can instantly obtain a key from our vendor.

When you enter the key correctly, you will see this confirmation:



Customer Feedback

All customer feedback is welcome and will be used for future updates. This software is specifically developed with the customer in mind.

If you would like to check out other products of ABCView, you can visit our website:



<http://www.abc-view.com/>